



Washington University in St. Louis

WashU At A ²⁰²³/₂₀₂₄ Glance



admissions.wustl.edu



Our Community

At WashU, our unparalleled community is at the heart of everything we do. The diversity of our community is built on a vast array of beliefs, experiences, and goals that not only shape students' individual perspectives, but also form our rich intellectual environment.



Our vibrant campus culture is grounded in a genuine desire to help one another grow and succeed, both inside and outside the classroom. Students work closely with their peers and faculty across disciplines. Opportunities abound for research, entrepreneurship, and community engagement. And with more than 450 registered student groups, there is a place for everyone to explore their interests.

Our commitment to providing a challenging and inclusive environment includes removing barriers to ensure that every student can take advantage of all WashU has to offer. We have launched several programs to increase access and support for students traditionally underrepresented in higher education: first-generation, limited-income, students of color, and those from rural areas and small towns.

Academics

- College of Architecture and College of Art, both part of the Sam Fox School of Design & Visual Arts
- College of Arts & Sciences
- Olin Business School
- McKelvey School of Engineering

More than 100 degree programs and more than 2,000 courses



SCAN HERE FOR THE FULL LIST OF MAJORS AND PROGRAMS

Faculty

- More than 4,300 professors
- 7:1 student-to-faculty ratio

Honors

- Pulitzer Prize 5
- Poet Laureate of the United States 3
- American Academy of Arts & Sciences 72
- National Academy of Sciences 61
- American Law Institute 31
- National Medal of Science 10
- Nobel Laureates (faculty and alumni) affiliated with WashU 26

admissions.wustl.edu

Affordability & Financial Assistance



admissions.wustl.edu

We meet 100% of demonstrated financial need for all admitted students, with awards ranging up to the full cost of attendance. This includes the WashU Pledge, which covers the full cost of tuition, fees, housing, and food for incoming first-year students from Missouri and specific counties in southern Illinois who come from a family earning \$75,000 or less annually.



WashU is need blind for all first-year applicants who are U.S. citizens or permanent residents—meaning we do not consider your ability to pay tuition when making admission decisions.

Scholarship Programs

WashU is committed to supporting talented students who show exceptional academic performance and outstanding promise.

The following scholarships, offered by each academic division, do not require a separate application process. Once you complete your Common Application or Coalition Application, you will be considered for the appropriate scholarship for the division to which you are applying. However, if you are applying for scholarships in either Architecture or Art, a digital portfolio is required. As you write the answer to our question about your academic interest, you should keep in mind that it will be used by the scholarship committees to select recipients.

Architecture

James W. Fitzgibbon Scholarships

Up to one full-tuition scholarship and up to five \$10,000 scholarships

Art

Conway/Proetz Scholarships

Up to one full-tuition scholarship and up to five \$10,000 scholarships

Arts & Sciences

Ampersand Scholarships

Up to 16 full-tuition scholarships

Business

Distinguished Scholars Program

Up to 10 full-tuition scholarships

Engineering

Alexander S. Langsdorf Fellowships

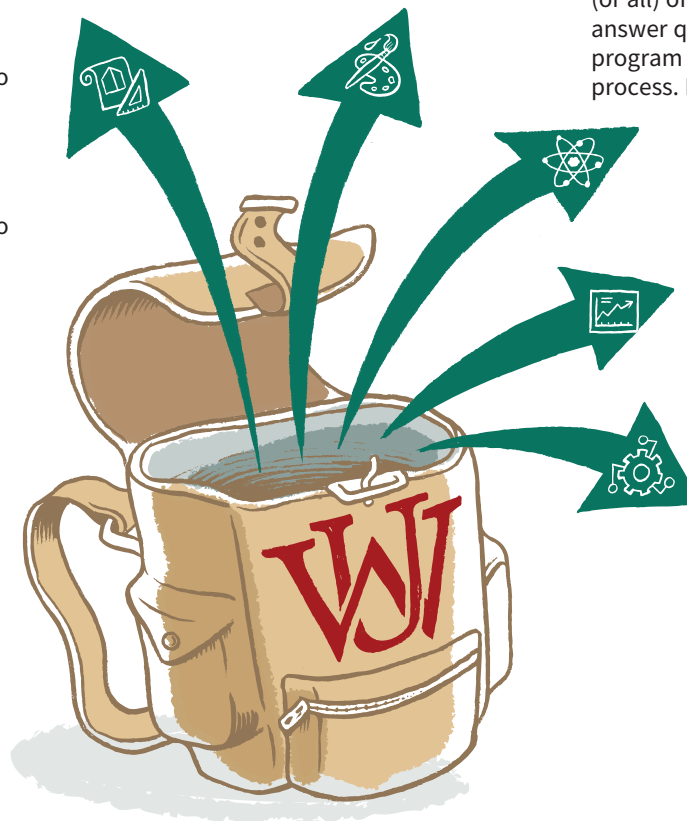
Up to 10 full-tuition fellowships

James M. McKelvey Undergraduate Research Awards

Up to eight \$5,000 research awards

admissions.wustl.edu

All scholarships are renewable for four years as long as the student is making satisfactory academic progress.



Signature Scholar Programs

Housed within the Office of Scholar Programs (OSP), the university's Signature Scholar Programs bring together students from each of the academic divisions to create unique academic and cultural communities. These merit-based scholarship programs each offer multiple partial- and full-tuition scholarships for four years. You may apply to one (or all) of these programs by responding to a short answer question and an essay question for each program as part of the admission application process. Details are available on our website.

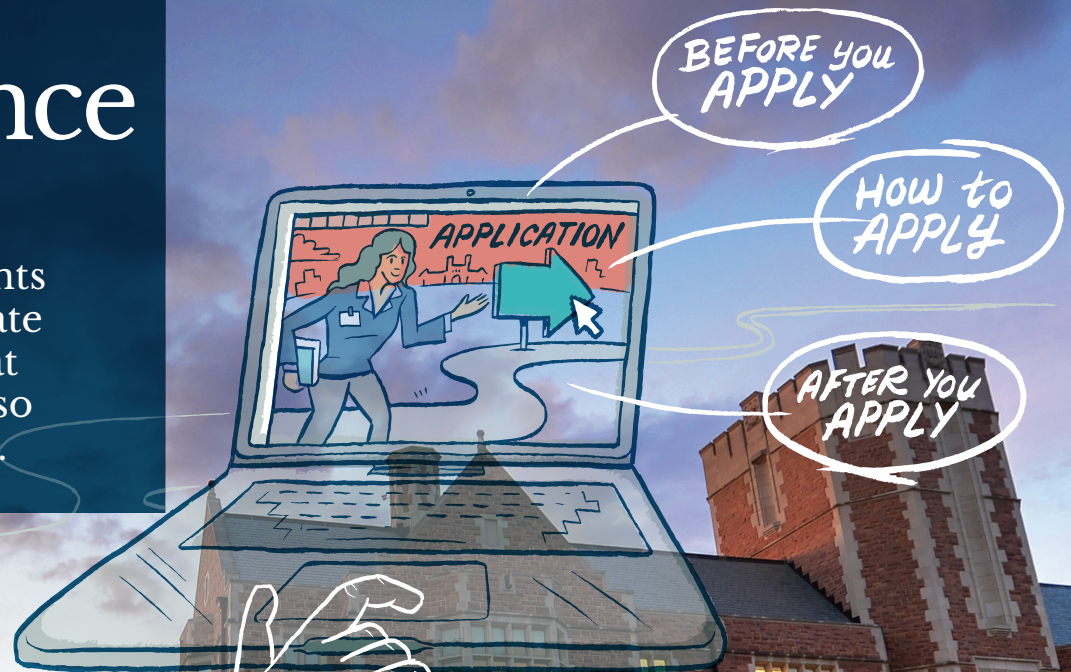
The Danforth Scholar Program honors students with a passion for helping others. We are looking for students who have demonstrated leadership in service and a strong commitment to community. Danforth Scholars are also known for their academic excellence, personal integrity, and high ideals.

The Annika Rodriguez Scholar Program recognizes students of exceptional merit who demonstrate academic and leadership achievements, as well as the passion for community service exemplified by Annika Rodriguez. In keeping with the legacy of the program, applicants should demonstrate their commitment to, or a history of, bringing diverse groups together and celebrating the cultures of different people.

The John B. Ervin Scholar Program was founded on four pillars—academic excellence, leadership, community service, and diversity. All our scholars are expected to exemplify these ideals to be competitive for this program. The Ervin Scholar Program is open to U.S. citizens, permanent residents, and undocumented or DACA students living in the U.S.

The Application Process at a Glance

Our team is here to help you through the application process! These important points will get you started, but please don't hesitate to call us with any questions or concerns at 800.638.0700 or 314.935.6000. You can also check out our website, admissions.wustl.edu.





Before you apply

Test Optional Policy

As part of our commitment to always put students first, all applicants for the class entering in Fall 2024 have the option of whether to submit standardized test scores when they apply. All applicants, whether or not they submit standardized testing, will receive full consideration for admission.

Please note: We will continue to require evidence of English Language proficiency (TOEFL, IELTS, or Duolingo English Test) for international applicants for whom English is a second language.



How to apply

Common Application or Coalition Application

WashU accepts the Common Application or Coalition Application, including a 200-word response to the question “Please tell us what you are interested in studying at college and why.” The Common Application is available online at commonapp.org, and the Coalition Application is available at coalitionapp.org.

Application Fee

The \$75 nonrefundable application fee is required and may be paid using a credit card when you submit your application. The application fee is waived for any student applying for need-based financial assistance.

After you apply

Optional Interview/Video

We offer optional interviews. However, they are in high demand, and we can’t always fulfill every request. But don’t worry! There’s another way to tell us more! We also encourage students to submit an optional 90-second video to share all the fun, interesting, and quirky qualities that make you...YOU!

WashU Pathway

The WashU Pathway is the single source of information about the status of your admission application, including any scholarship applications and support materials. You’ll also find a link to check the status of your financial assistance application. Within a few days of submitting your admission application, you will receive login instructions to access the WashU Pathway via our website.

Midyear Report

The Midyear Report is an important component of our evaluation process. Your counselor should send us a transcript and midyear report (if available) as soon as your first trimester or semester ends. If you are applying Early Decision I or II, you must submit your first marking period grades (first quarter, trimester, or progress report) in order to complete your application.

Final Report

Applicants who are admitted and who choose to enroll will be required to have their high school submit an official final transcript and a Final Report (if available).

Financial Assistance

Students who wish to be considered for financial assistance must submit the appropriate application documents. Visit our website for complete details and deadlines.





First-Year Application Deadlines

Early Decision I

Early Decision II

Regular Decision

Application Submitted and Complete by:
(Common Application or Coalition Application)

November 1

January 3

January 3

Signature Scholarship Applications Complete by:

January 3

January 3

January 3

Admission Decision Released by:

December 15

February 16

April 1

Candidate Reply Date

January 3

March 1

May 1

For details about our Financial Assistance application process, including submission of the FAFSA, visit admissions.wustl.edu or scan the QR code to the right.



800.638.0700 or 314.935.6000
admissions.wustl.edu

Undergraduate Admissions
MSC 1089-105-05
One Brookings Drive
St. Louis, MO 63130-4899

 [washuadmissions](https://www.instagram.com/washuadmissions)
 [washuadmissions](https://twitter.com/washuadmissions)
 [wustl_official](https://www.tiktok.com/@wustl_official)
 Washington University in St. Louis

Washington University encourages and gives full consideration to all applicants for admission, financial assistance, and employment. The university does not discriminate in access to, or treatment or employment in, its programs and activities on the basis of race, color, age, religion, gender, sexual orientation, gender identity or expression, national origin, veteran status, disability, or genetic information. Applicants with a prior criminal history will not be automatically disqualified from consideration for admission. Inquiries about compliance should be addressed to the Vice Chancellor for Human Resources and Institutional Equity, Washington University, MSC 1190-853-03, One Brookings Drive, St. Louis, MO 63130.